

Aetria®

Control rooms made simple



Engineering the **world's best** visual solutions

DATA PATH
EXCELLENCE BY DESIGN

The changing requirements of modern **control rooms**

Today's control rooms are more complex than ever before. Solutions need to balance managing the increasing quantities of sources, content and data, with maintaining total reliability and usability for the operator.



Key challenges

The growing complexity of control rooms present great challenges for System Integrators.

■ Delivering the right solution

Producing solution designs driven by end-user requirements.

■ Knowing what works

Maintaining a full understanding of the capabilities, compatibility and limitations of all software and hardware that forms part of the solution.

■ Customer support

Enable ongoing maintenance and support for a solution built on technologies from different vendors.

Aetria, **control rooms** made simple

Aetria is Datapath's integrated solution for the design, management and operation of control rooms of any size.

With Aetria...

- System integrators have the freedom to design and deploy the right solution by following a structured, integrated process.
- Configuration of all connectivity to workstations and video walls is managed through a single interface, the Aetria Command Center. From here Administrators are able to organize all sources, layouts and templates for operator use and deployment to walls.
- As sources get delivered directly to the workstation with instant KVM control, users can focus on their core objectives, rather than how to make the technology work.



Aetria is the **complete solution**

Aetria has been developed with system integrators and end-users in mind.

For the Operator:

■ Any source, any screen

Flexibility to route multiple copies of sources to any workstation or video wall in the control room.

■ Single integrated platform

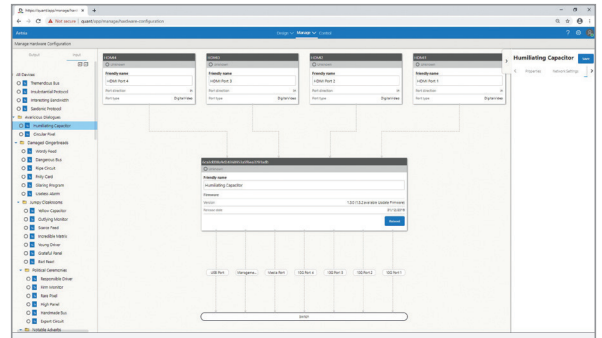
Operation and control of the entire control room from a single, intuitive interface.

■ Distraction-free operation

Aetria works behind the scenes, ensuring operators are free to focus on their primary objectives.

■ IP KVM

Workstation options are available for source display with keyboard & mouse control using IP-based KVM, along with the option for sources to be displayed and controlled within a Windows desktop environment.



Single, intuitive interface for the end-to-end design, management and control of your entire control room.

For the System Integrator:

■ Single integrated platform

Full end-to-end design, management and control of your project from a single, intuitive interface.

■ Freedom to design

Design solutions based on user requirements, not technical capabilities and limitations of specific products.

■ Management of all solution components

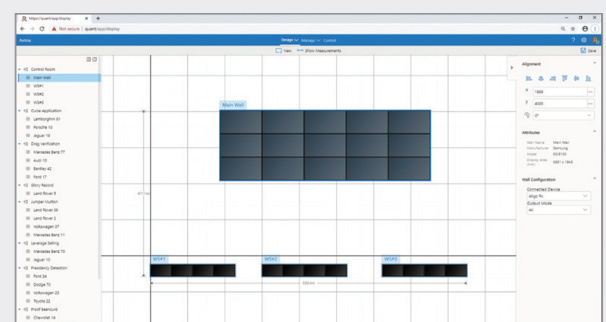
Easily configure and manage all workstations, video walls, sources, and connectivity between them.

■ Simplify control for operators

Pre-configure templates, layouts and sources for quick recall by operators.

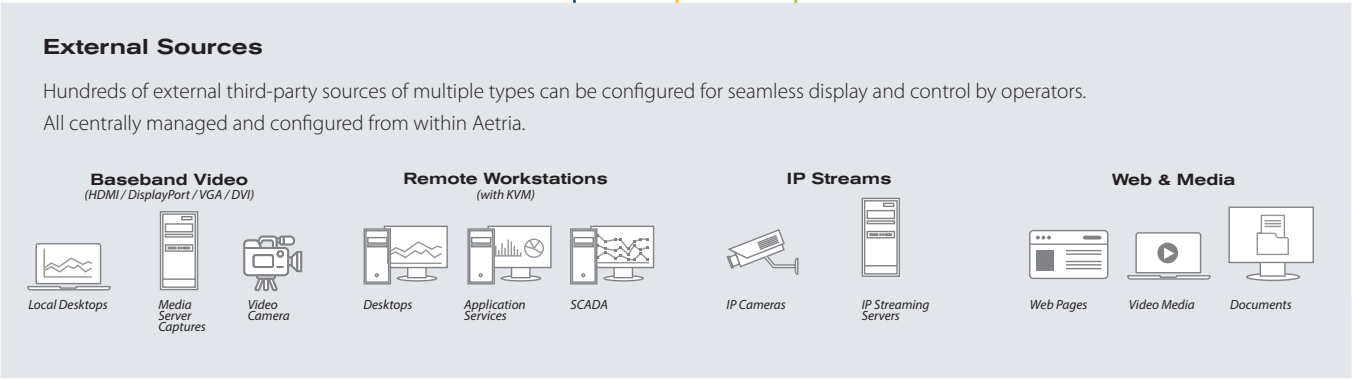
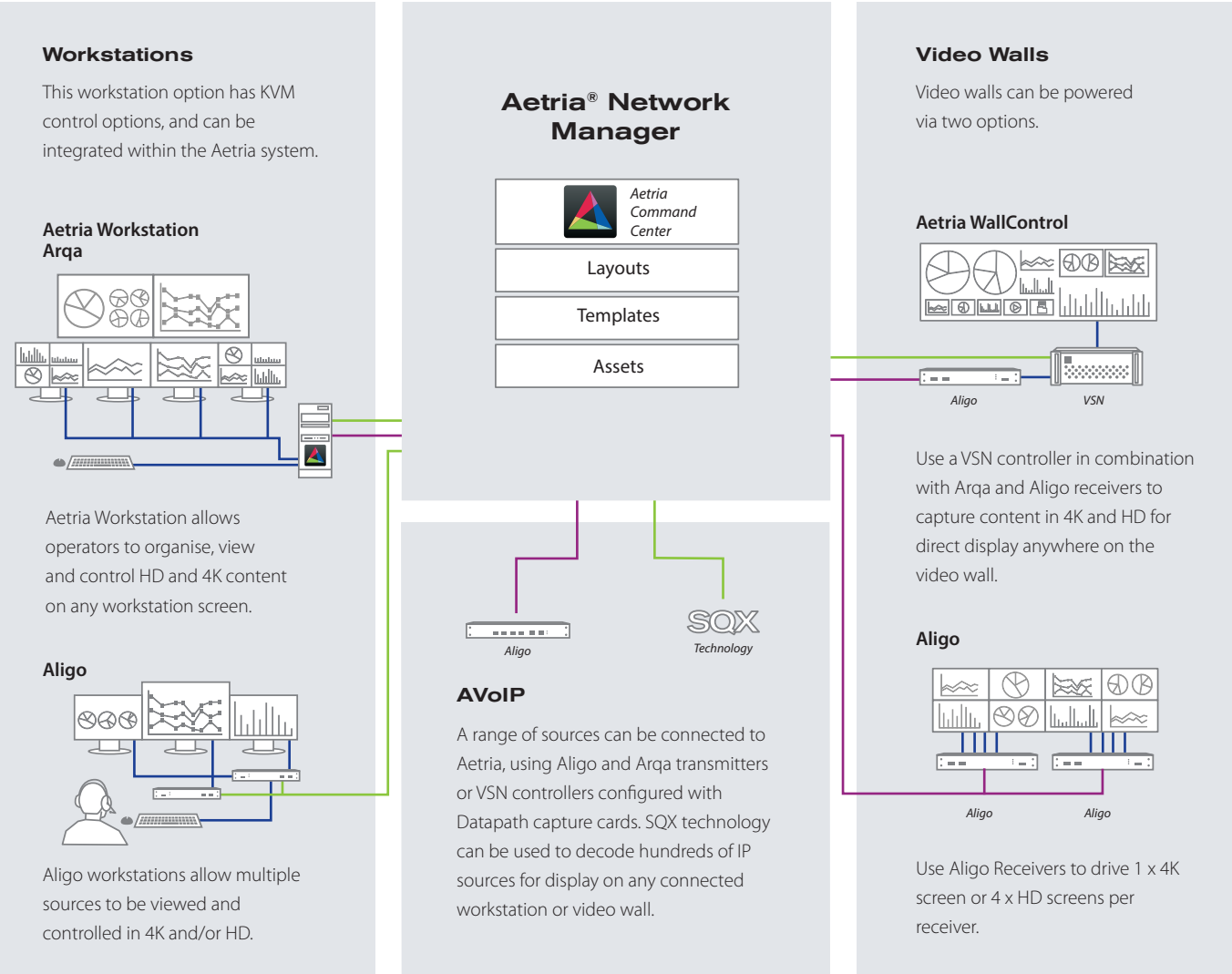
■ Built-in monitoring & diagnostics

Aetria monitors all solution components to ensure smooth operation and swift response if issues occur.



Aetria Integration Options

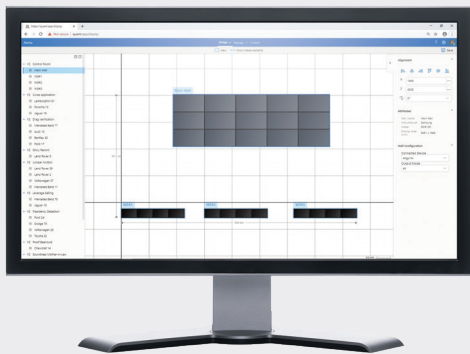
An overview of the available options for integrating operator workstations, content sources, video walls and networks in Aetria.



Aetria Components

Datapath provide complete Aetria control room solutions, including all software and hardware components.

Design and Configuration



Aetria Designer

Aetria Designer is the dedicated design software for Aetria solutions. It is provided free of charge and can be installed on any Windows 10 system.

Designs can be created without being connected to a network, making it easy to create, review and approve designs any time, anywhere.

Aetria Command Center

Sitting at the heart of the Aetria solution, Aetria Command Center provides a comprehensive, centralized interface for systems integrators to design, manage and deploy control rooms solutions. Once deployed, control room operators use Aetria Command Center to quickly and easily view the sources they need in real-time on any connected display surface.

Operator Workstations



Aetria Workstation

Aetria Workstation gives Control Room Operators the flexibility to view multiple sources on their local workstation screens. Using single or multiple monitors, operators can segment their desktop into dedicated zones to display any combination of sources available in Aetria alongside their main desktop and local applications.

Hardware-based IP KVM Workstations

Workstations are created using multiple Aligo or Arqa receivers. Operators can then seamlessly push and pull any source to any workstation or video wall using an intuitive on-screen interface.

Aligo

Visually lossless 4K content with real-time KVM control and simultaneous compressed streams for every source.

Arqa

Secure access to multiple remote HD desktops over a low-bandwidth network from a single workspace.





Video Walls



Aetria WallControl

Aetria WallControl runs on a Datapath VSN controller to connect Aetria to a video wall, enabling seamless integration of video walls into the Aetria ecosystem.



VSN Wall Controller

Datapath's video wall controllers are supplied into many mission critical and crisis room applications. The VSN video wall controller systems are capable of integrating many types of video and data sources onto any display configuration, using Datapath's latest generation of video capture cards and graphics cards.

Aligo Walls

Video walls can be directly driven by Aligo receivers, with a single receiver able to drive a 4K display or up to four HD displays.

AVoIP Connectivity



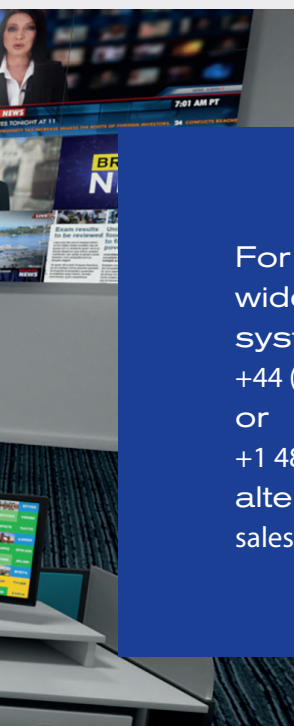
Aligo

Aligo, Datapath's AV-over-IP solution, provides visually lossless 4K and HD content across a dedicated AV network and compressed streams on low-bandwidth infrastructure at the same time, delivering unprecedented quality and flexibility in content distribution.



Arqa

Arqa video distribution system with KVM has been developed specifically for demanding command and control environments and other critical AV applications. Arqa gives operators access to multiple remote sources from a single workspace, without sacrificing video quality or round-trip latency.



For more information on our wide range of video distribution systems, contact us on +44 (0) 1332 294441 or +1 484 679 1553 (for US) alternatively email sales@datapath.co.uk

Find out more on how Aetria can help in your next control room installation.

Aetria, control rooms made simple

Datapath UK and

Corporate Headquarters

Bemrose House, Bemrose Park,
Wayzgoose Drive, Derby,
DE21 6XQ, United Kingdom

☎ +44 (0) 1332 294 441

✉ sales-uk@datapath.co.uk

www.datapath.co.uk

Datapath North America

2490 General Armistead Ave,
Suite 102, Norristown,
PA 19403,
USA

☎ +1 484 679 1553

✉ sales-us@datapath.co.uk

Datapath Japan

Axon Hamamatsucho,
1-1-23 Shibadaimon,
Minato-ku,
Tokyo-to,
105-0012, Japan

✉ sales-jp@datapath.co.uk


DATAPATH
EXCELLENCE BY DESIGN