

Aetria Workstation

Quick Start Guide



Engineering the **world's best** visual solutions


DATAPATH
EXCELLENCE BY DESIGN

Aetria Workstation Quick Start Guide

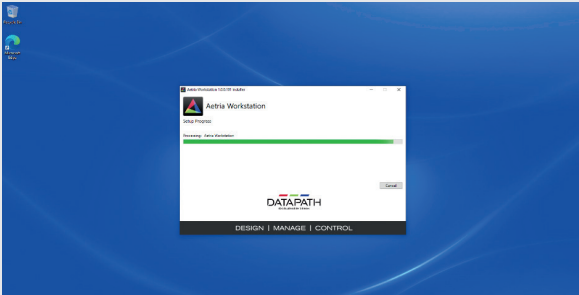
Thank you for purchasing Aetria Workstation. The aim of this document is to quickly guide you through the process of initial setup.

For more detailed information, relevant User Guides can be downloaded from www.datapath.co.uk.

GETTING STARTED WITH AETRIA WORKSTATION

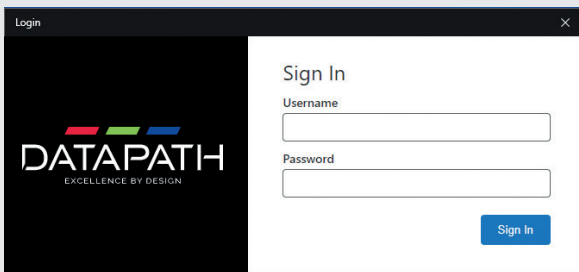
To install Aetria Workstation, locate the workstation installation file on the Aetria Installation Media and copy it locally to the machine that will host the application. Click on the install.exe file and run the installer.

Accept the license by clicking inside the license checkbox then select 'Run'. You will then be prompted to allow the application to make changes to the system. Select 'Yes' and the installation will continue. The following progress dialog is presented:



When the installation is complete, close the dialog. There may be a requirement to reboot the machine.

OPENING THE AETRIA WORKSTATION APPLICATION

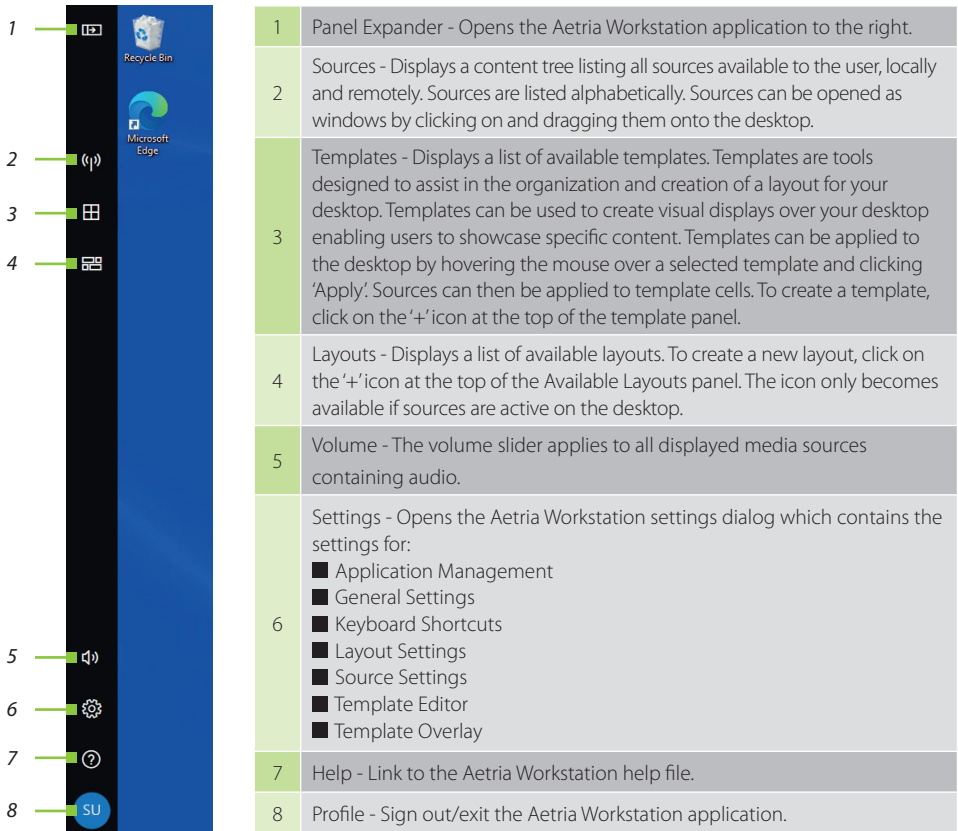


Select 'Aetria Workstation' from Start Menu and the Login dialog is displayed.

Log on to the application using the allocated credentials. It should be noted that the Aetria Workstation will not work until the Aetria Workstation license has been activated. Details on how to activate the license can be found in the Aetria Command Center Quick Start Guide.

Aetria Workstation Quick Start Guide

After logging in, the Aetria Workstation application bar is displayed on the left of the desktop as follows:



COPYRIGHT STATEMENT

© Datapath Ltd., England, 2021

Datapath Limited claims copyright on this documentation. No part of this documentation may be reproduced, released, disclosed, stored in any electronic format, or used in whole or in part for any purpose other than stated herein without the express permission of Datapath Limited.

Whilst every effort is made to ensure that the information contained in this Quick Start Guide is correct, Datapath Limited make no representations or warranties with respect to the contents thereof, and do not accept liability for any errors or omissions.

Datapath reserves the right to change specification without prior notice and cannot assume responsibility for the use made of the information supplied. All registered trademarks used within this documentation are acknowledged by Datapath Limited.

CERTIFICATION

EU – Class A Declaration of Conformity



Datapath Ltd declares that this product complies with the essential requirements and other relevant provisions of Directives 2014/30/EU, 2014/35/EU and 2011/65/EU.

A copy of our Declaration of conformity is available on request.

Datapath Limited
Bemrose House
Bemrose Park
Wayzgoose Drive
Derby, DE21 6XQ
UK

A full list of product compliance certifications can be found in the product User Guide on the Documentation Media supplied with the system.

Datapath UK and

Corporate Headquarters

Bemrose House, Bemrose Park,
Wayzgoose Drive, Derby,
DE21 6XQ, United Kingdom

☎ +44 (0) 1332 294 441

✉ sales-uk@datapath.co.uk

Datapath North America

2490 General Armistead Avenue,
Suite 102, Norristown,
PA 19403, USA

☎ +1 484 679 1553

✉ sales-us@datapath.co.uk

www.datapath.co.uk

